

NOTICE TO ALL SKIPPERS

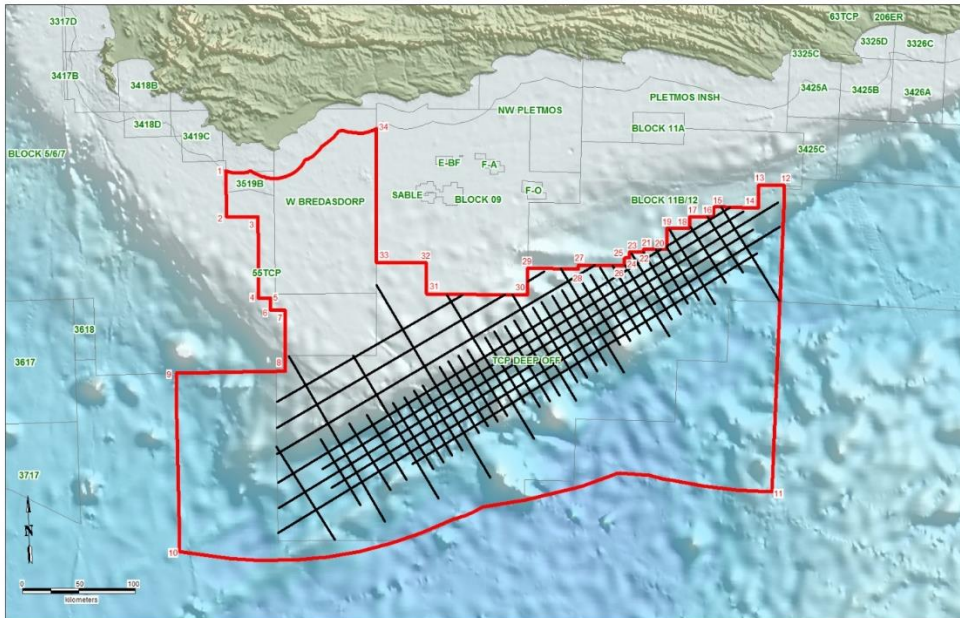
OFFSHORE SEISMIC SURVEY: SOUTH AFRICA

Petroleum Geo-Services (PGS) will be conducting a 2D seismic survey commencing **21st December 2015** for a period of approximately five months until the end of **April 2016**. The survey vessel **M/V ATLANTIC EXPLORER** will be operating off the South Coast within the Reconnaissance Licence Area indicated below. The survey area is approximately 75 370 km² in extent, located roughly between Cape Agulhas and Cape St. Francis in water depths ranging from 200 m to over 4 000 m. The seismic survey is approximately 7 000 km in length comprising a number of low density spaced survey lines covering a large area off the South Coast.

The vessel will be towing an airgun array as well as a single streamer cable with a length of 10,500 m. The streamer cable will be submerged and will not be visible at the surface except for a tail-buoy marking the end of the cable. The vessel is **severely** restricted in her ability to stop or turn and needs a **minimum all round clearance of 5 nautical miles** from vessel and gear. If you are passing or plan to fish in the proximity of the area shown in the figure above, could you please advise the Survey Vessel **M/V ATLANTIC EXPLORER** of your position on VHF Channel 16 / 2182 kHz / 4146 kHz. Two support vessels, **MV Remus** and **MV Marie-Jose**, will be in attendance for the duration of the survey. Your assistance in this matter would be greatly appreciated and we apologize for any inconvenience caused.

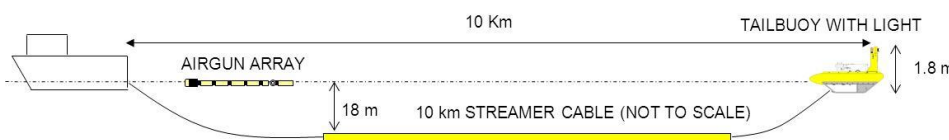


	M/V Atlantic Explorer	M/V Remus	M/V Marie-Jose
Call sign	C6TU2	HO 5491	ZR9183
Flag	Bahamas	Panama	South Africa
Length	91.30m	46.75m	40.20m
Beam / breath	17.40m	10.00m	9.00m
Max draft	8.40m	4.75m	5.15m
Gross tonnage	4639	710	469
Max speed	12kts	12kts	13kts
Bridge contact no.	+47 67 51 47 08	+44 203 1454 799	+31 5020 10024



Survey Boundary Co-ordinates:

Point	Lat (S)	Long (E)
1	34 59.72	19 31.77
2	35 22.09	19 31.77
3	35 22.09	19 50.27
4	36 01.91	19 50.27
5	36 01.91	19 57.25
6	36 07.74	19 57.25
7	36 07.74	20 05.63
8	36 37.68	20 05.63
9	36 37.68	19 00.00
10	38 04.41	19 00.00
11	37 32.28	25 00.00
12	35 03.50	25 00.00
13	35 03.50	24 44.97
14	35 15.00	24 44.97
15	35 15.00	24 18.97
16	35 20.00	24 18.97
17	35 20.00	24 04.97
18	35 26.00	24 04.97
19	35 26.00	23 51.97
20	35 36.50	23 51.97
21	35 36.50	23 38.47
22	35 38.00	23 38.47
23	35 38.00	23 29.97
24	35 41.00	23 29.97
25	35 41.00	23 26.97
26	35 45.00	23 26.97
27	35 45.00	22 59.97
28	35 47.00	22 59.97
29	35 47.11	22 29.97
30	36 00.00	22 29.97
31	36 00.00	21 30.00
32	35 45.00	21 30.00
33	35 45.00	21 00.00
34	34 39.48	21 00.00



Should you wish to receive daily updates on the survey progress and location of the survey vessel please contact:

Capricorn Marine Environmental – Sarah Wilkinson
 Email: sarah@capfish.co.za; Tel: +27214256226; Mob: +27827289673